



INSTALLATION GUIDE

BBCD068

TO SUIT LDV T60 Dual Cab 2017+



- Ironman 4x4 BBCD068 Bull Bars to suit LDV T60 Dual Cab Ute 2017+ 2.8L Turbo Diesel Engine
- It will take about 3 hours to install

DATE OF ISSUE: 050219

NOTE: This product has been tested for air bag compatibility and therefore the mounting system MUST NOT BE modified

IMPORTANT: Bull Bar installations should only be done by a qualified person and it's the responsibility of this person to ensure correct fitment.

1. Before installation check bull bar application is compatible with your vehicle.

2. Unwrap bull bar. Check overrides and light assemblies are tight in the bull bar before installation.

3. Remove grill, front bumper and bumper support brackets.



4. Mark bumper bar with template provided on each side, continue line across bumper bar as shown.

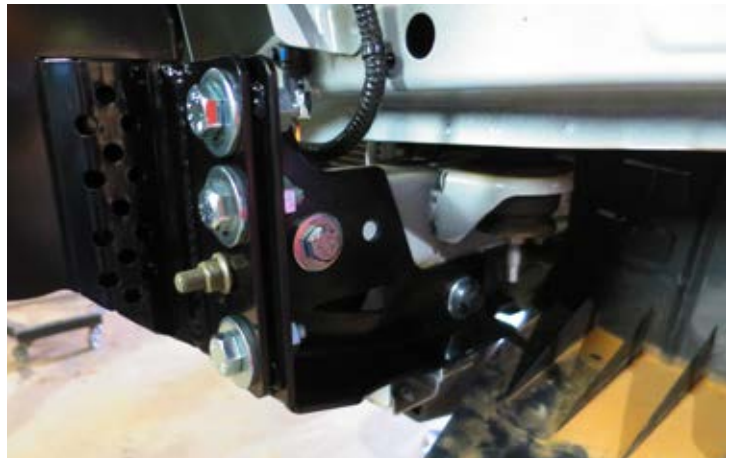


5. Cut bumper bar and re-fit to vehicle. Use supplied edging over bumper cut.



6. Loosely fit inner and outer chassis support brackets with supplied hardware. Install chassis bracket to vehicle using hardware provided.

Centralise and tighten all bolts.



7. Using chassis bracket as a guide, drill a 12.5mm hole through chassis and install supplied M12 bolts, flat washers, spring washers and nuts.



8. If Winch is being installed, refer to winch instructions from page 10.

9. If applicable, fit parking sensors to bull bar as per instructions on page 6.

10. If applicable, fit camera above winch fairlead.

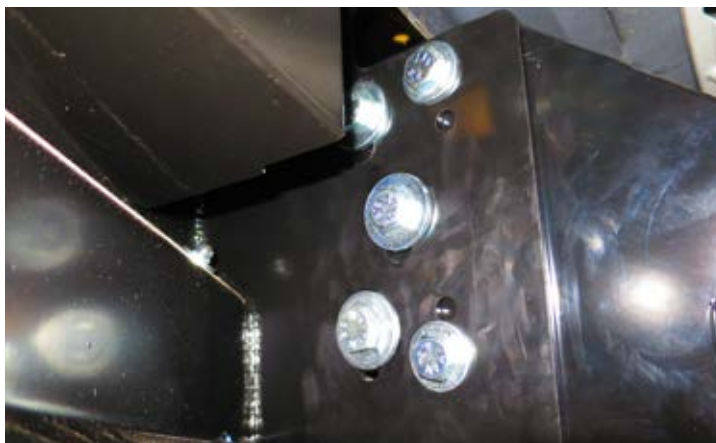


11. Fit bull bar to chassis brackets using M12 bolts, flat washers, spring washers, and nuts provided.

12. Align bull bar with vehicle leaving a 15mm gap between bull bar and bumper bar.



- 13.** Once bull bar is tightened into place, drill and pin the bar using supplied M10 bolts.



- 14.** Connect park lights, indicators and fog lights as per wiring diagram on page 12.

- 15.** Fit the centre under tray sitting above factory underbody plates.



- 16.** Fit side plates and trim guard liners to suit.



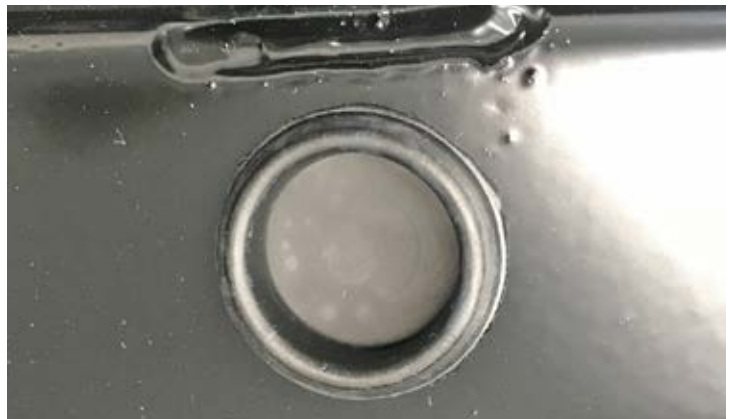
Plastic Parking Sensor Installation

IMPORTANT: Parking sensors should be installed as close to the same direction as when they sit in the factory bumper.

1. For new vehicles with parking sensors, the new bars will now come with a plastic parking sensor holder kit. The sensor mounting kit will be inside the bar mounting hardware box.



2. The bars come with a rubber plug in the sensors hole. This plug needs to be pushed out if you need to install the sensors into the bar.



3. Using supplied wipes, clean around the sensor hole on the **INSIDE** of the bar.



4. The kit comes with double sided stickers to enable you to stick the sensor holder in place.



5. Remove the middle of the sensor holder to allow the vehicle sensor to go through.



6. Clean the plastic sensor holder with supplied wipes and install the double sided sticker.



7. Remove the double sided stickers protective layer and install the sensor holder into the bar.



IMPORTANT: Parking sensors should be installed as close to the same direction as when they sit in the factory bumper.



- 10.** Install the backing plate to suit the sensor.



- 11.** Ensure that the sensor is installed correctly and centred.



Winch Installation

1. Fit winch to bracket and bolt fairlead to recess in front of bull bar using bolts, washers and nuts provided.



2. Fit bull bar to vehicle referring to steps of bull bar fitting instructions.

3. Mount control box in desired location.



4. Connect three colour coded cables to the corresponding poles on winch motor.



5. Connect the thin black earth wire and negative battery cable to the earth connection on the opposite side of winch motor.



6. Run the positive and negative battery cables into the engine bay taking care to secure cables away from any sharp or moving objects.

7. Connect positive and negative battery cables main battery of vehicle (Not Auxilliary Battery).

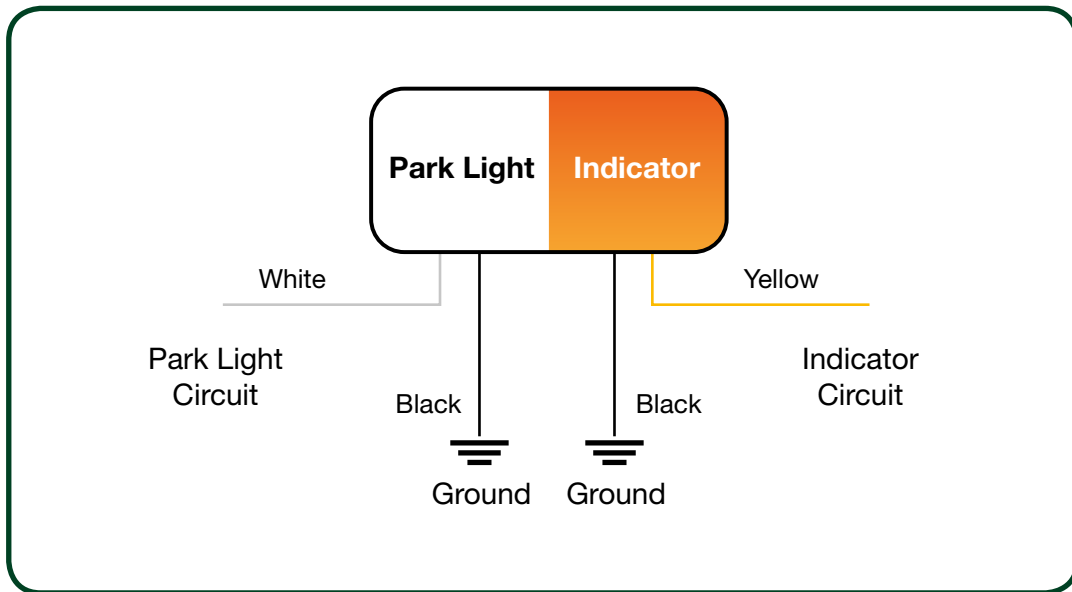
8. Attach breather hose to barb fitting on winch motor. Run hose to the highest available point in engine bay and cable tie in position. Cable tie hose away from any sharp, hot or moving objects.

Refer back to step 18 of the Bull Bar fitting instructions on page 7



Wiring Diagrams

PARK LIGHT & INDICATOR



FOG LIGHTS

